



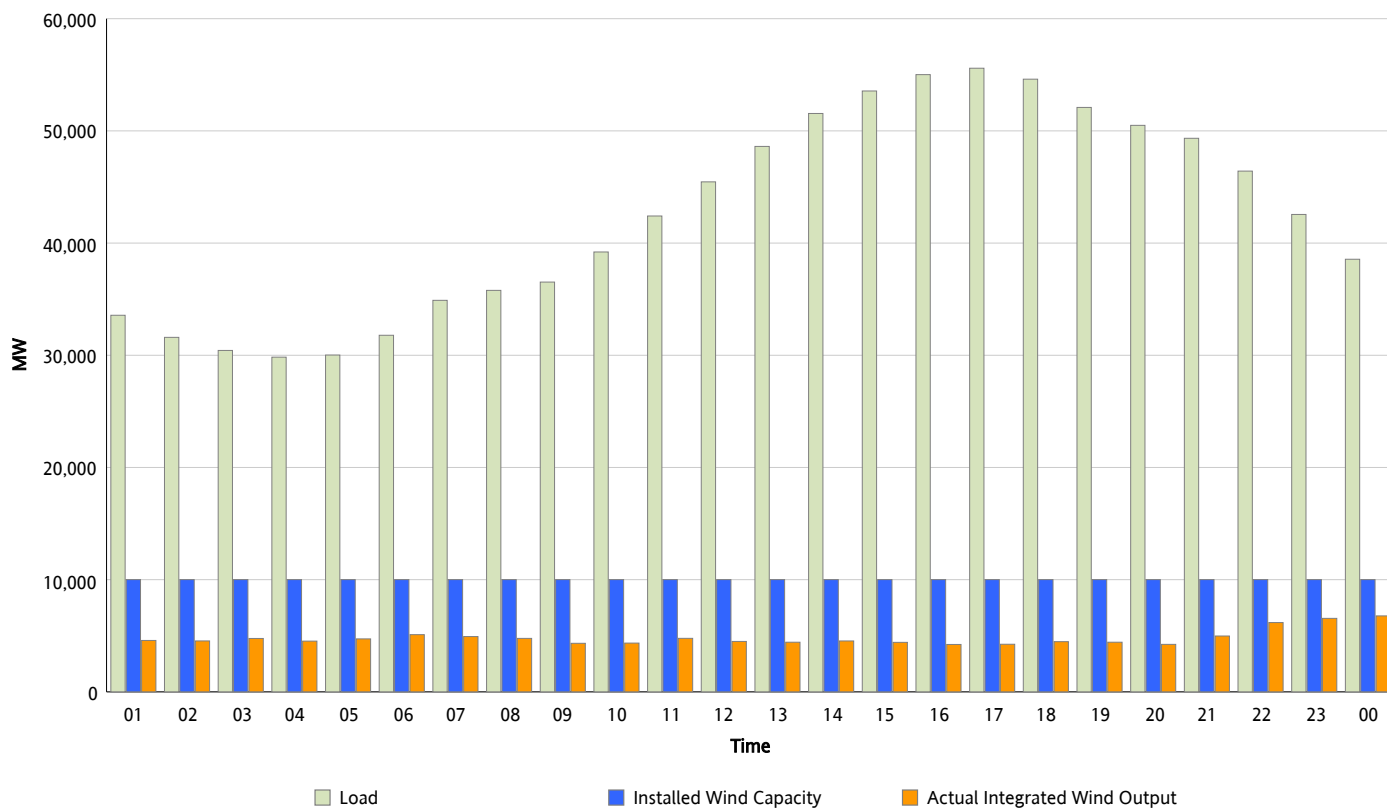
ERCOT Grid Operations

Wind Integration Report : 09/24/2012

Peak Load	55,587 MW
Load Peak Hour (HE)	17
Wind Over Peak	4,244 MW
Wind Record 06/19/12	8,368 MW
Max Wind Value*	6,918 MW
Wind Peak Time	23:25
Wind Integration %	17.84 %

Hourly Average Actual Load vs. Actual Wind Output

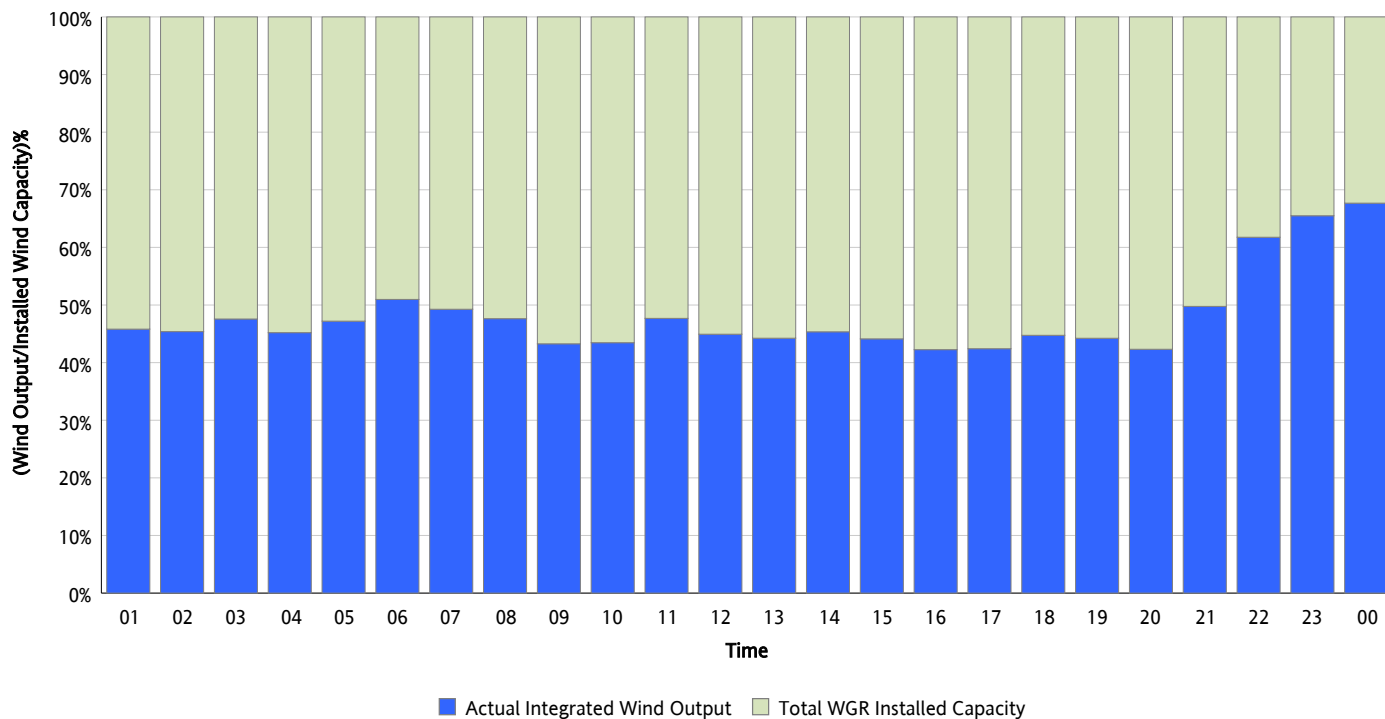
09/24/2012



* Wind Record and Wind Max represent instantaneous values and the rest of the values are integrated over the hour

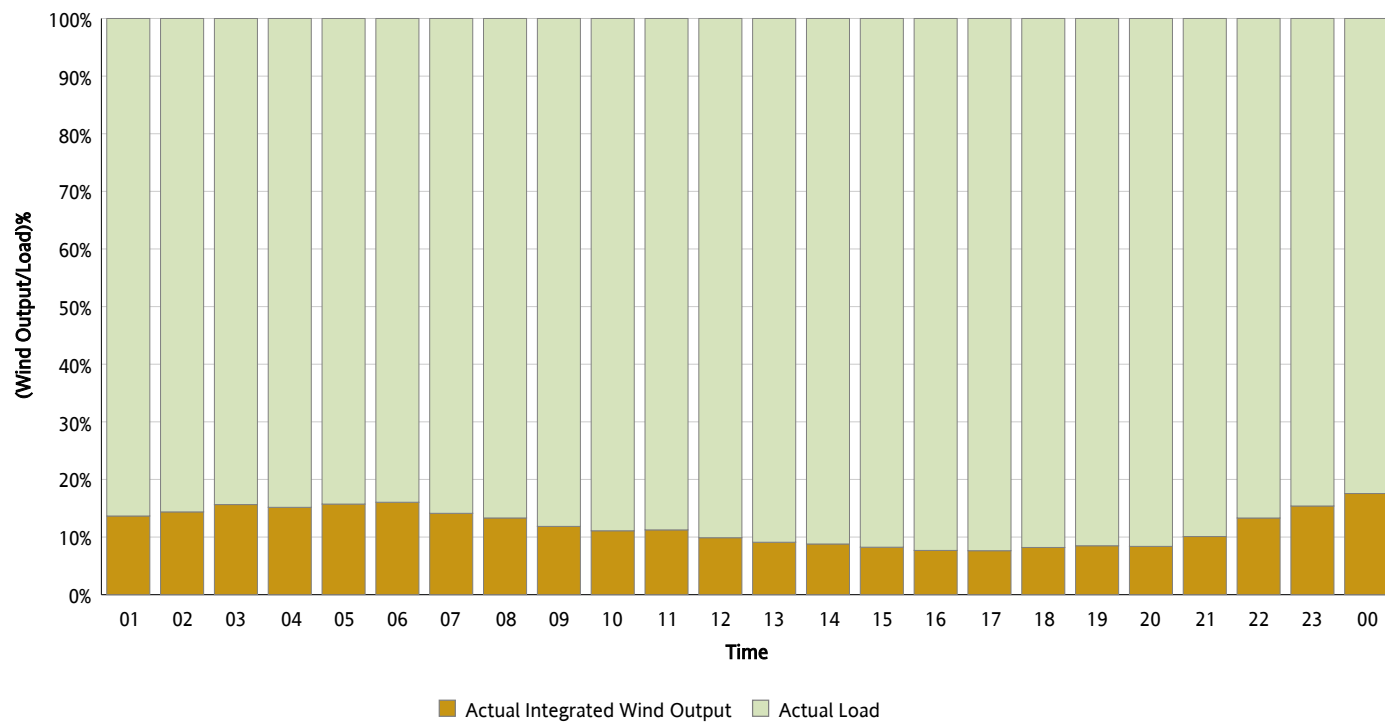
Actual Wind Output as a Percentage of the Total Installed Wind Capacity

09/24/2012



Actual Wind Output as a Percentage of the ERCOT Load

09/24/2012



ERCOT Load vs. Actual Wind Output

09/17/2012 - 09/24/2012

